

TOWER VILLAGE
623 TOWER ROAD
LEBANON, MISSOURI 65536

STARK WILSON DUNCAN ARCHITECTS INC.
315 NICHOLS RD. STE 228 - KANSAS CITY, MO 64112 - T 816.531.1986 F 816.531.1978

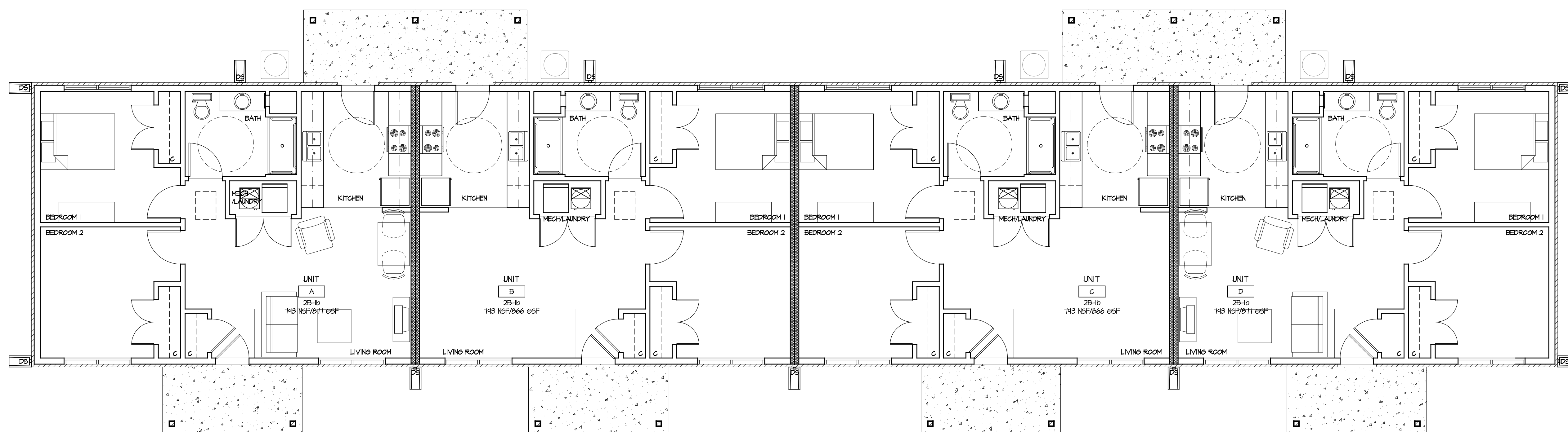
SEAL
ARCHITECT - TIMOTHY O.K. WILSON
MO. LICENSE NO. A-6972



14C
BUILDING TYPE 'A'
FLOOR PLAN
ISSUE DATE:
7.31.2016
REVISIONS:

PROJECT NO.: 0000

A1.1



B6 BUILDING TYPE 'A' FLOOR PLAN
SCALE: 3/16"=1'-0"

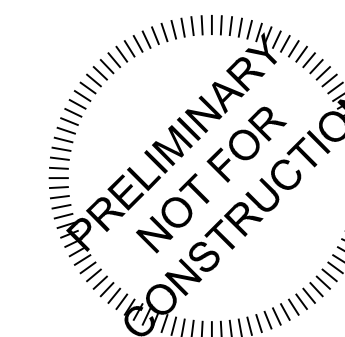


ARCHITECTURAL CORPORATION
MISSOURI CERTIFICATE
OF AUTHORITY NO. 000073

TOWER VILLAGE
623 TOWER ROAD
LEBANON, MISSOURI 65536

STARK WILSON DUNCAN ARCHITECTS INC.
315 NICHOLS RD. STE 228 - KANSAS CITY, MO 64112 - T 816.531.1986 F 816.531.1978

SEAL
ARCHITECT - TIMOTHY O.K. WILSON
MO. LICENSE NO. A-6972

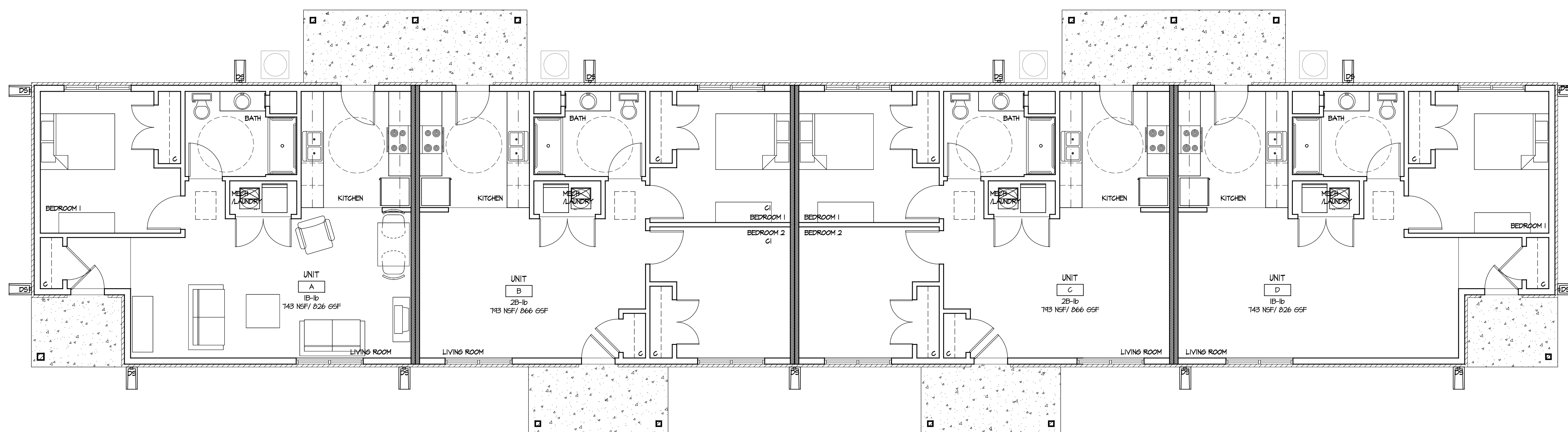


14C
BUILDING TYPE 'B'
FLOOR PLAN
ISSUE DATE:
7.31.2016
REVISIONS:

PROJECT NO.: 0000

A1.2

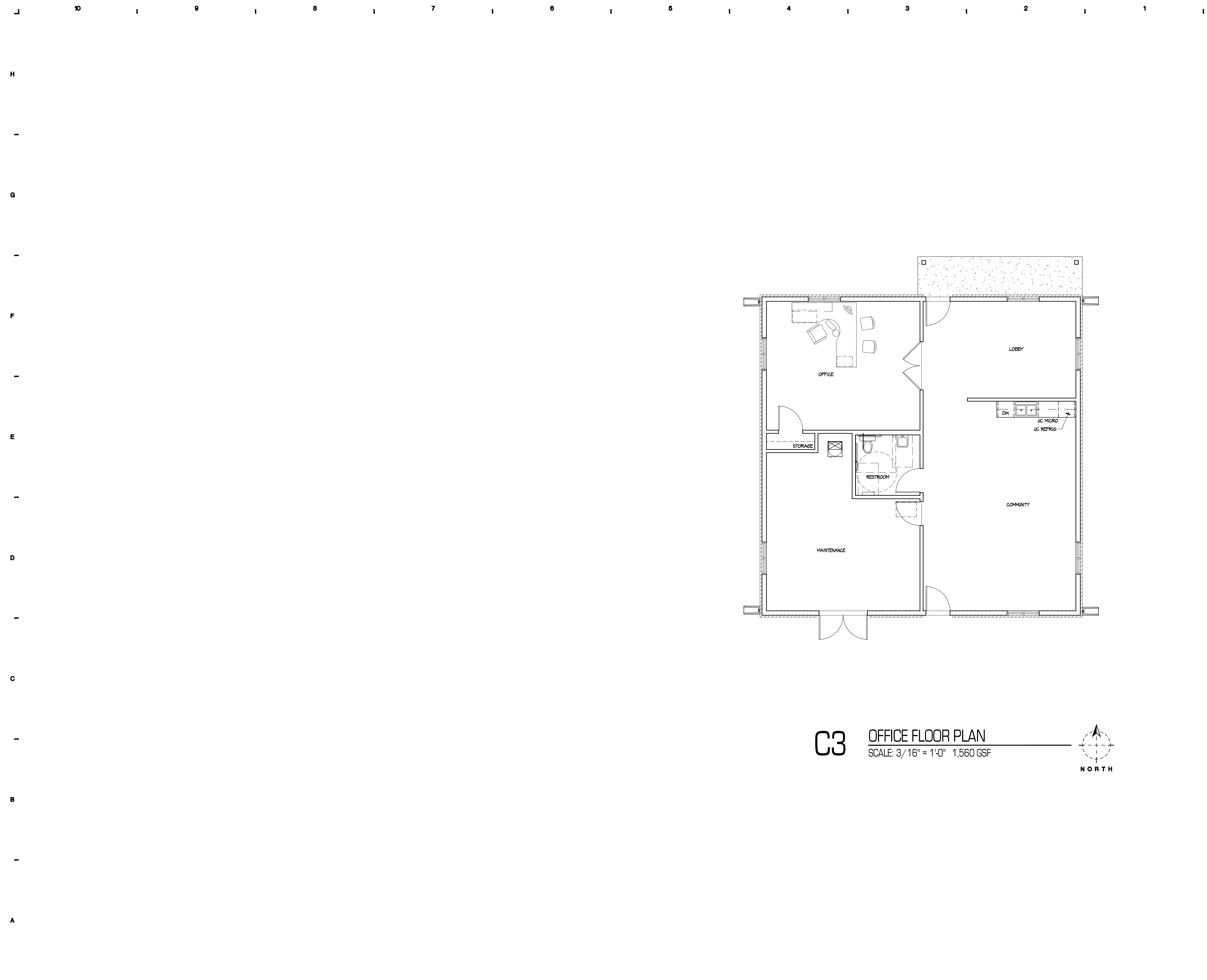
COPYRIGHT © 2016 SWD ARCHITECTS INC.



A6 BUILDING TYPE 'B' FLOOR PLAN
SCALE: 3/16"=1'-0"

M:\POTENTIAL PROJECTS\2016\DREILLY LEBANON\A1.2.dwg
Aug 08, 2016 9:33am

M:\POTENTIAL PROJECTS\2016\DREILLY LEBANON\A1.3.dwg
Aug 04, 2016 10:45am



C3 OFFICE FLOOR PLAN
 SCALE: 3/16" = 1'-0" 1,560 GSF



ARCHITECTURAL CORPORATION
 MISSOURI CERTIFICATE
 OF AUTHORITY NO. 000073

TOWER VILLAGE
 623 TOWER ROAD
 LEBANON, MISSOURI 65536

STARK WILSON DUNCAN ARCHITECTS INC.
 315 NICHOLS RD. STE 228 - KANSAS CITY, MO 64112 - T 816.531.1978 F 816.531.1978

SEAL
 ARCHITECT - TIMOTHY O.K. WILSON
 MO. LICENSE NO. A-6972



14C
 OFFICE FLOOR PLAN

ISSUE DATE:
 7.31.2016
 REVISIONS:

PROJECT NO.: 0000

A1.3

COPYRIGHT © 2016 SWD ARCHITECTS INC.